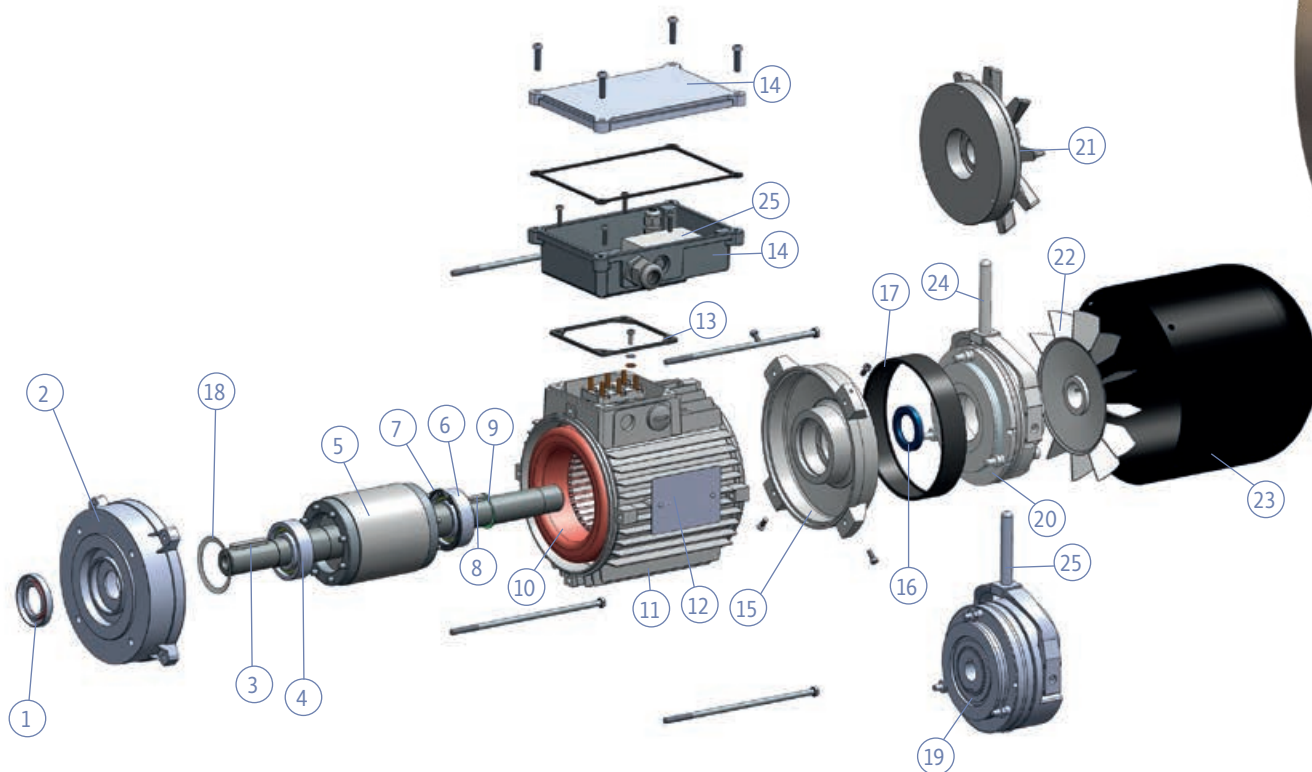


Motore autofrenante

BRAKE MOTOR



1	Tenuta anteriore	Front Seal
2	Calotta anteriore (Scudo - B5 - B14)	A-Side shield (Shield, flange B5 or B14)
3	Chiavetta	Key
4	Cuscinetto anteriore	A-Side Bearing
5	Indotto	Shaft+rotor
6	Cuscinetto posteriore	B-Side Bearing
7	Seeger cuscinetto	Seeger ring for bearing
8	Chiavetta per freno	Key for brake
9	Seeger freno	Seeger ring for brake
10	Statore avvolto	Stator
11	Carcassa	Housing
12	Targhetta	Nameplate
13	Guarnizione copribasetta	Terminal box seal
14	Portaalimentatore	Terminal box for Rectifier
15	Scudo in ghisa	Cast Iron Shield
16	Tenuta posteriore	Rear Seal
17	Anello parapolvere	Dust Seal
18	Anello di compensazione	Compensation Ring
19	Freno trifase	Three-Phase Brake
20	Freno DC	DC brake
21	Rallentatore	S-Series brake
22	Ventola	Fan
23	Copriventola	Fan Cover
24	Leva di sblocco	Hand release
25	Raddrizzatore	Rectifier