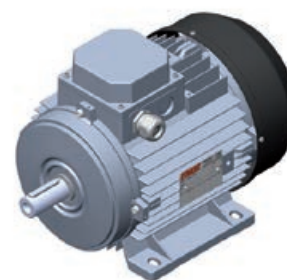
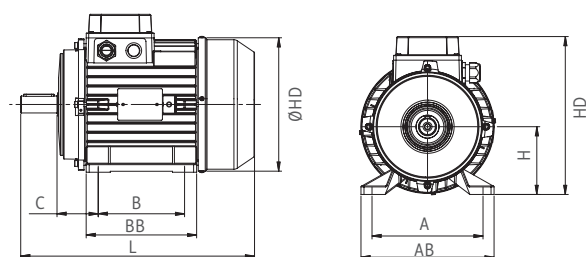


Tabelle dimensionali motori asincroni trifase

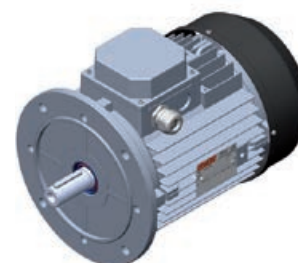
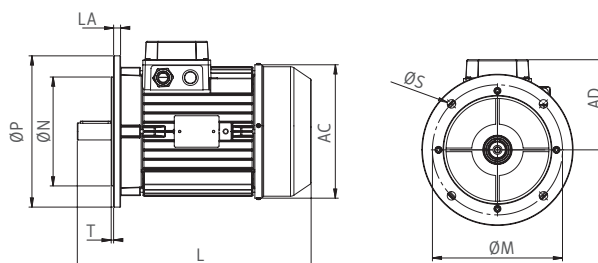
DIMENSIONAL TABLE OF ASYNCHRONOUS THREE-PHASE MOTORS

Forma B3 | Shape B3

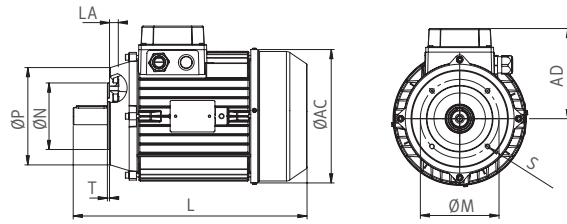
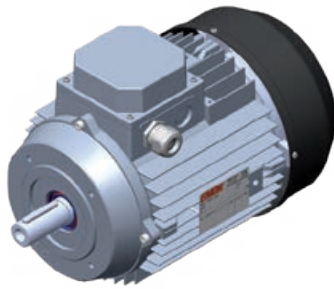


GRANDEZZA Frame	ACCOPIAMENTO Mounting									INGOMBRI Dimension		
	H	AB	A	BB	B	K	K1	C		L	HD	AC
	[mm]	[mm]	[mm]	[mm]	[mm]	[mm]	[mm]	[mm]	[mm]	[mm]	[mm]	[mm]
56 ¹	56	112	90	90	71	6,5	8,5	36	M5	187	114	111
63 ¹	63	120	100	100	80	7	10	40	M6	212	157	122
71 ¹	71	135	112	112	90	7	12	45	M6	245	176	141
80 ¹	80	152	125	124	100	9	13	50	M8	280	205	160
90S ¹	90	170	140	130	100	9	13	56	M8	305	196	176
90L ¹	90	170	140	155	125	9	13	56	M8	328	196	176
100 ¹	100	192	160	163	140	12	17	63	M10	367	240	193
112 ¹	112	220	190	183	140	12	19	70	M10	390	275	218
132S ^{1,2}	132	260	216	180	140	12	22	89	M10	460	315	260
132M ^{1,2}	132	260	216	218	178	12	22	89	M10	498	315	260
160M ²	160	320	254	264	210	14,5	30	108	M12	600	405	310
160L ²	160	320	254	308	254	14,5	30	108	M12	645	405	310
180M ²	180	339	279	291	241	14,5	30	121	M12	700	440	350
180L ²	180	339	279	329	279	14,5	30	121	M12	700	440	350
200 ²	200	398	318	355	305	18,5	30	133	M16	730	460	350

Forma B5 | Shape B5



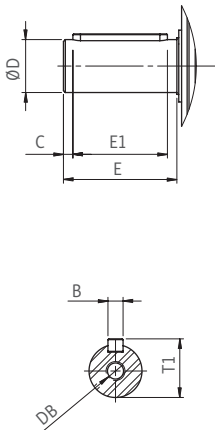
GRANDEZZA Frame	ACCOPIAMENTO Mounting									INGOMBRI Dimension		
	Flangia Flange	LA	M	N		P	S	T	L	AC	AD	
		[mm]	[mm]	[mm]	[µm]	[mm]	[mm]	[mm]	[mm]	[mm]	[mm]	
56	FF100	8	100	80	+12 / - 7	120	4 x 7	3	187	111	57	
63	FF115	8	115	95	+13 / - 9	140	4 x 9	3	212	122	94	
71	FF130	8	130	110	+13 / - 9	160	8 x 9	3	245	141	104	
80	FF165	9	165	130	+14 / - 11	200	8 x 11	3	280	160	123	
90S	FF165	9	165	130	+14 / - 11	200	8 x 11	3,5	305	176	126	
90L	FF165	9	165	130	+14 / - 11	200	8 x 11	3,5	328	176	126	
100	FF215	11	215	180	+14 / - 11	250	4 x 14	4	367	193	140	
112	FF215	11	215	180	+14 / - 11	250	4 x 14	4	390	218	153	
132S	FF265	15	265	230	+16 / - 13	300	4 x 15	5	460	260	183	
132M	FF265	15	265	230	+16 / - 13	300	4 x 15	5	498	260	183	
160M ³	FF300	14	300	250	+16 / - 13	350	4 x 18,5	5	600	310	245	
160L ³	FF300	14	300	250	+16 / - 13	350	4 x 18,5	5	645	310	245	
180M ³	FF300	19	300	250	+16 / - 13	350	4 x 18,5	5	700	350	260	
180L ³	FF300	19	300	250	+16 / - 13	350	4 x 18,5	5	700	350	260	
200 ³	FF350	20	350	300	0 / - 32	400	4 x 18,5	5	730	350	280	



Forma B14 | Shape B14

GRANDEZZA Frame	ACCOPIAMENTO Mounting								INGOMBRI Dimension		
	Flangia Flange	LA	M	N		P	S	T	L	AC	AD
		[mm]	[mm]	[mm]	[μ m]	[mm]		[mm]	[mm]	[mm]	[mm]
56	FT65	6	65	50	+11 / - 5	80	M5	2,5	187	111	57
63	FT75	6	75	60	+12 / - 7	90	M5	2,8	212	122	94
71	FT85	6,5	85	70	+12 / - 7	105	M6	2,5	245	141	104
80	FT100	12	100	80	+12 / - 7	120	M6	3	280	160	123
90S	FT115	14	115	95	+13 / - 9	140	M8	3	305	176	126
90L	FT115	14	115	95	+13 / - 9	140	M8	3	328	176	126
100	FT130	12	130	110	+13 / - 9	160	M8	3,5	367	193	140
112	FT130	14	130	110	+13 / - 9	160	M8	3,5	390	218	153
132S	FT165	14	165	130	+14 / - 11	200	M10	3,5	460	260	183
132M	FT165	14	165	130	+14 / - 11	200	M10	3,5	498	260	183
160M ³	FT215	18	215	180	+14 / - 11	250	M12	4	600	310	245
160L ³	FT215	18	215	180	+14 / - 11	250	M12	4	645	310	245

Dimensioni Albero | Shaft Dimensions



GRANDEZZA Frame	ALBERO Shaft								LINGUETTA Key
	E	E1	C	D		B	T1	DB	L
	[mm]	[mm]	[mm]	[mm]	[μ m]	[mm]	[mm]		[mm]
56	20	15	2,5	9	+7 / - 2	3	10,2	M3	3x3x15
63	23	18	4	11	+8 / - 3	4	12,5	M4	4x4x18
71	30	22	5	14	+9 / - 4	5	16	M5	5x5x22
80	40	32	5	19	+9 / - 4	6	21,5	M6	6x6x32
90S	50	40	7,5	24	+9 / - 4	8	27	M8	8x7x40
90L	50	40	7,5	24	+9 / - 4	8	27	M8	8x7x40
100	60	50	7,5	28	+9 / - 4	8	31	M10	8x7x50
112	60	50	7,5	28	+9 / - 4	8	31	M10	8x7x50
132S/M	80	70	10	38	+18 / +2	10	41	M12	10x8x70
160M/L	110	90	10	42	+18 / +2	12	45	M16	12x8x90
180M/L	110	100	5	48	+18 / +2	14	51,5	M16	14x9x100
200	110	100	5	55	+11 / +30	16	59	M20	16x10x100

Cuscinetti | Bearings

	TIPO Type										
	56	63	71	80	90	100	112	132	160	180	200
LATO ALBERO A-side	6201	6202	6202	6204	6205	6206	6206	6308	6309	6310	6312
LATO OPPOSTO B-side	6201	6202	6202	6204	6205	6206	6206	6308	6309	6310	6310