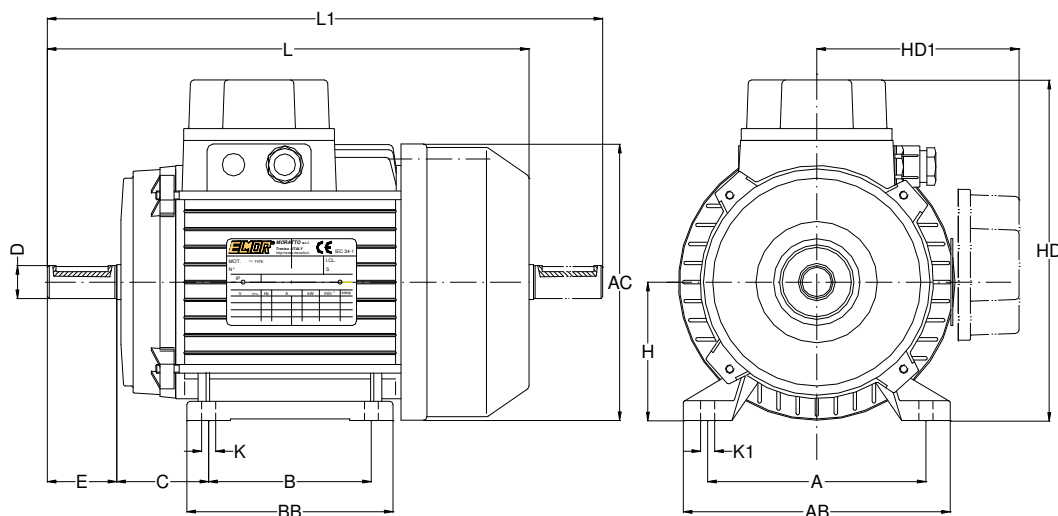
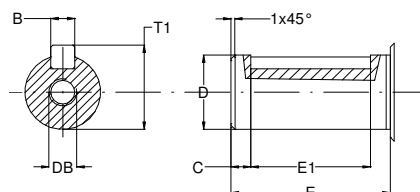


**TABELLE DIMENSIONALI MOTORI ASINCRONI TRIFASE**

 DIMENSIONAL TABLE ASYNCHRONOUS THREE-PHASE MOTORS  
 ABMESSUNGEN DREHSTROM ASYNCHRONMOTOREN

**FORMA B3 – B3/BL**

GRANDEZZA Size Bg	ACCOPPIMENTO Mounting / Anbau								INGOMBRI Dimension / Abmessungen				
	H	AB	A	BB	B	K	K1	C	L	HD	HD1	AC	L1
	[mm]	[mm]	[mm]	[mm]	[mm]	[mm]	[mm]	[mm]	[mm]	[mm]	[mm]	[mm]	[mm]
56	56	112	90	90	71	6,5	8,5	36	187	113	/	111	212
63	63	120	100	100	80	7	10	40	212	157	92	122	238
71	71	135	112	112	90	7	12	45	244	175	94	141	278
80	80	152	125	124	100	9	13	50	280	203	105	160	323
90S	90	170	140	130	100	9	13	56	303	216	123	176	355
90L	90	170	140	155	125	9	13	56	327	216	123	176	380
100	100	192	160	163	140	12	17	63	367	240	138	193	428
112	112	220	190	183	140	12	19	70	380	265	149	218	456
132S	132	260	216	180	140	12	22	89	460	315	180	260	541
132M	132	260	216	218	178	12	22	89	498	315	180	260	579
160M <sup>(*)</sup>	160	320	254	264	210	14,5	30	108	600	400	240	310	666
160L <sup>(*)</sup>	160	320	254	308	254	14,5	30	108	645	400	240	310	715

GRANDEZZA Size Bg	ALBERO Shaft / welle								LINGUETTA Key Passfedern
	E	E1	C	D		B	T1	DB	
				[mm]	[µm]				
56	20	15	2,5	9	+7 -2	3	10,2	M3	3x3x15
63	23	18	4	11	+8 -3	4	12,5	M4	4x4x18
71	30	22	5	14	+9 -4	5	16	M5	5x5x22
80	40	32	5	19	+9 -4	6	21,5	M6	6x6x32
90S	50	40	7,5	24	+9 -4	8	27	M8	8x7x40
90L	50	40	7,5	24	+9 -4	8	27	M8	8x7x40
100	60	50	7,5	28	+9 -4	8	31	M10	8x7x50
112	60	50	7,5	28	+9 -4	8	31	M10	8x7x50
132S/M	80	70	10	38	+18 +2	10	41	M12	10x8x70
160M/L	110	90	10	42	+18 +2	12	45	M16	12x8x90

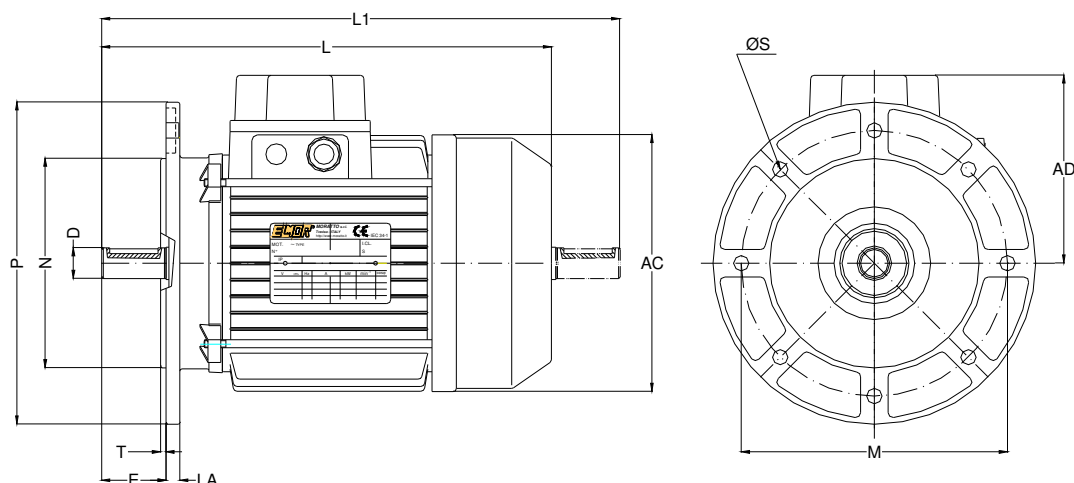


(\*) Piedi Riportati

(\*) Angeschraubte Füßen

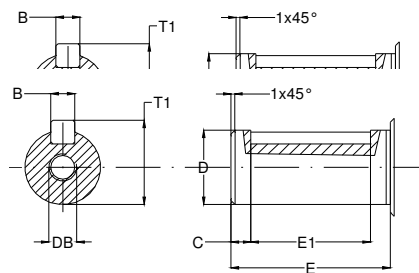
(\*) Detachable feet

**TABELLE DIMENSIONALI MOTORI ASINCRONI TRIFASE**

 DIMENSIONAL TABLE ASYNCHRONOUS THREE-PHASE MOTORS  
 ABMESSUNGEN DREHSTROM ASYNCHRONMOTOREN

**FORMA B5**

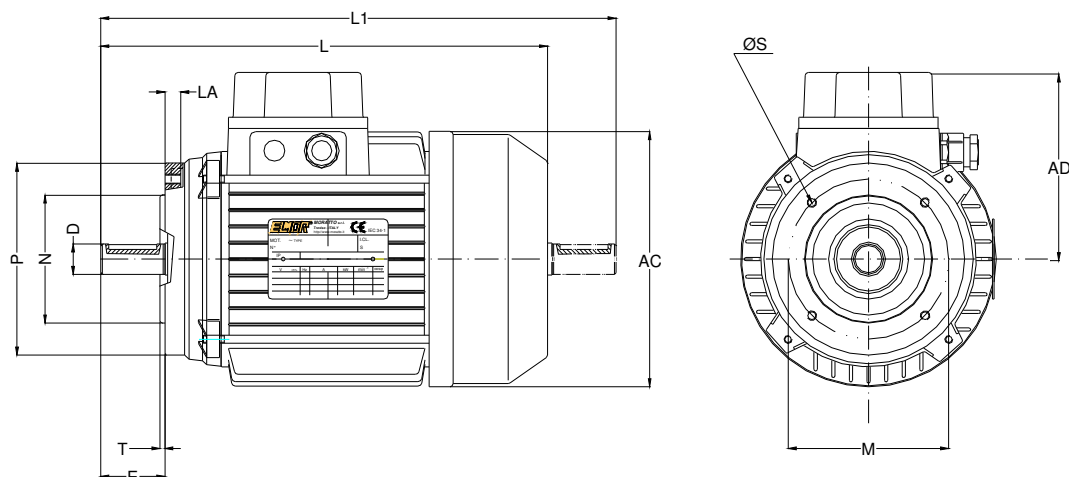
GRANDEZZA Size Bg	ACCOPPIMENTO Mounting / Anbau							INGOMBRI Dimension / Abmessungen			
	LA	M	N		P	S	T	L	L1	AC	AD
	[mm]	[mm]	[mm]	[µm]	[mm]	[mm]	[mm]	[mm]	[mm]	[mm]	[mm]
56	8	100	80	+12 -7	120	7	3	187	212	111	57
63	8	115	95	+13 -9	140	9	3	212	238	122	94
71	8	130	110	+13 -9	160	9	3,5	244	278	141	104
80	9	165	130	+14 -11	200	11	3,5	280	323	160	123
90S	9	165	130	+14 -11	200	11	3,5	303	355	176	126
90L	9	165	130	+14 -11	200	11	3,5	327	380	176	126
100	11	215	180	+14 -11	250	14	4	367	428	193	140
112	11	215	180	+14 -11	250	14	4	380	456	218	153
132S	18	265	230	+16 -13	300	14	4	460	541	260	183
132M	18	265	230	+16 -13	300	14	4	498	579	260	183
160M <sup>(*)</sup>	14	300	250	+16 -13	350	18,5	5	600	666	310	240
160L <sup>(*)</sup>	14	300	250	+16 -13	350	18,5	5	645	715	310	240

GRANDEZZA Size Bg	ALBERO Shaft / welle								LINGUETTA Key Passfedern
	E	E1	C	D		B	T1	DB	
	[mm]	[mm]	[mm]	[mm]	[µm]	[mm]	[mm]		
56	20	15	2,5	9	+7 -2	3	10,2	M3	3x3x15
63	23	18	4	11	+8 -3	4	12,5	M4	4x4x18
71	30	22	5	14	+9 -4	5	16	M5	5x5x22
80	40	32	5	19	+9 -4	6	21,5	M6	6x6x32
90S	50	40	7,5	24	+9 -4	8	27	M8	8x7x40
90L	50	40	7,5	24	+9 -4	8	27	M8	8x7x40
100	60	50	7,5	28	+9 -4	8	31	M10	8x7x50
112	60	50	7,5	28	+9 -4	8	31	M10	8x7x50
132S/M	80	70	10	38	+18 +2	10	41	M12	10x8x70
160M/L	110	90	10	42	+18 +2	12	45	M16	12x8x90



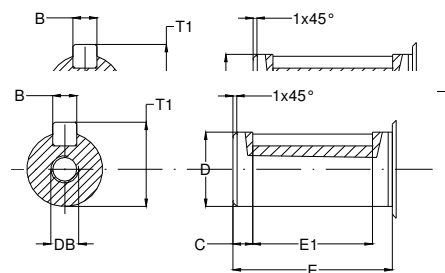
(\*) Piedi Riportati  
 (\*) Angeschraubte Fußen  
 (\*) Detachable feet

**TABELLE DIMENSIONALI MOTORI ASINCRONI TRIFASE**

 DIMENSIONAL TABLE ASYNCHRONOUS THREE-PHASE MOTORS  
 ABMESSUNGEN DREHSTROM ASYNCHRONMOTOREN

**FORMA B14**

GRANDEZZA Size Bg	ACCOPIAMENTO Mounting / Anbau							INGOMBRI Dimension / Abmessungen			
	LA	M	P	N	S	T	L	L1	AC	AD	
	[mm]	[mm]	[mm]	[mm]	[µm]	[mm]	[mm]	[mm]	[mm]	[mm]	
56	8	65	80	50	+11 -5	M5	2,5	187	212	111	57
63	6	75	90	60	+12 -7	M5	2,5	212	238	122	94
71	8	85	105	70	+12 -7	M6	2,5	244	278	141	104
80	10	100	120	80	+12 -7	M6	3	280	323	160	123
90S	10	115	140	95	+13 -9	M8	3	303	355	176	126
90L	10	115	140	95	+13 -9	M8	3	327	380	176	126
100	10	130	160	110	+13 -9	M8	3,5	367	428	193	140
112	13	130	160	110	+13 -9	M8	3,5	380	456	218	153
132S	15	165	200	130	+14 -11	M10	4	460	541	260	183
132M	15	165	200	130	+14 -11	M10	4	498	579	260	183
160M <sup>(*)</sup>	18	215	250	180	+14 -11	M12	4	600	666	310	240
160L <sup>(*)</sup>	18	215	250	180	+14 -11	M12	4	645	715	310	240

GRANDEZZA Size Bg	ALBERO Shaft / welle								LINGUETTA Key Passfedern
	E	E1	C	D		B	T1	DB	
	[mm]	[mm]	[mm]	[mm]	[µm]	[mm]	[mm]		
56	20	15	2,5	9	+7 -2	3	10,2	M3	3x3x15
63	23	18	4	11	+8 -3	4	12,5	M4	4x4x18
71	30	22	5	14	+9 -4	5	16	M5	5x5x22
80	40	32	5	19	+9 -4	6	21,5	M6	6x6x32
90S	50	40	7,5	24	+9 -4	8	27	M8	8x7x40
90L	50	40	7,5	24	+9 -4	8	27	M8	8x7x40
100	60	50	7,5	28	+9 -4	8	31	M10	8x7x50
112	60	50	7,5	28	+9 -4	8	31	M10	8x7x50
132S/M	80	70	10	38	+18 +2	10	41	M12	10x8x70
160M/L	110	90	10	42	+18 +2	12	45	M16	12x8x90



(\*) Piedi Riportati  
 (\*) Angeschraubte Füßen  
 (\*) Detachable feet